



GMT MONTHLY MEMBERSHIP PROGRESS REPORT

Results as of: 4/30/2019

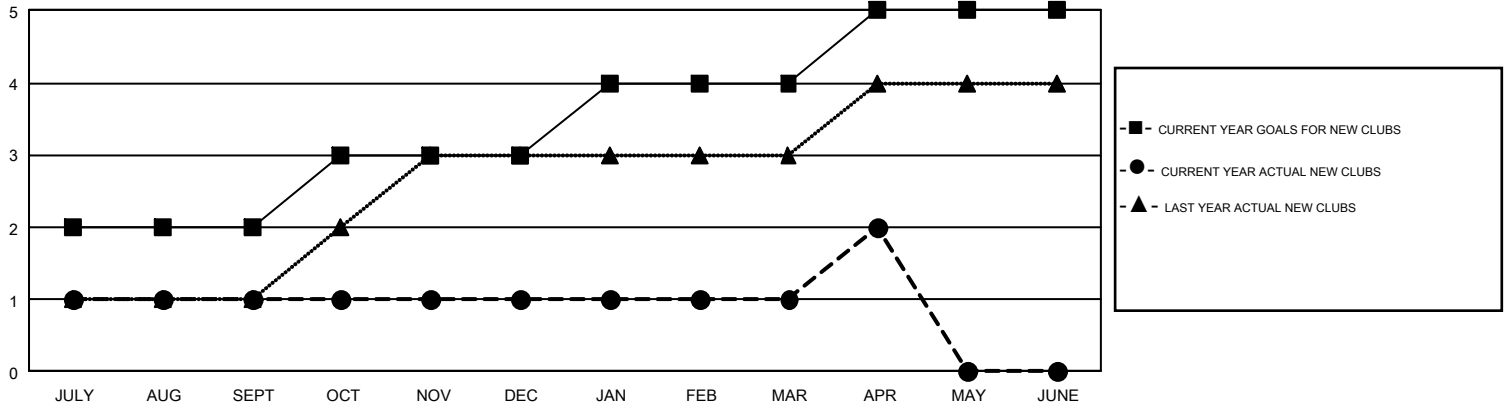
GMT Constitutional Area 5, Group G

GMT: TERESA MANN

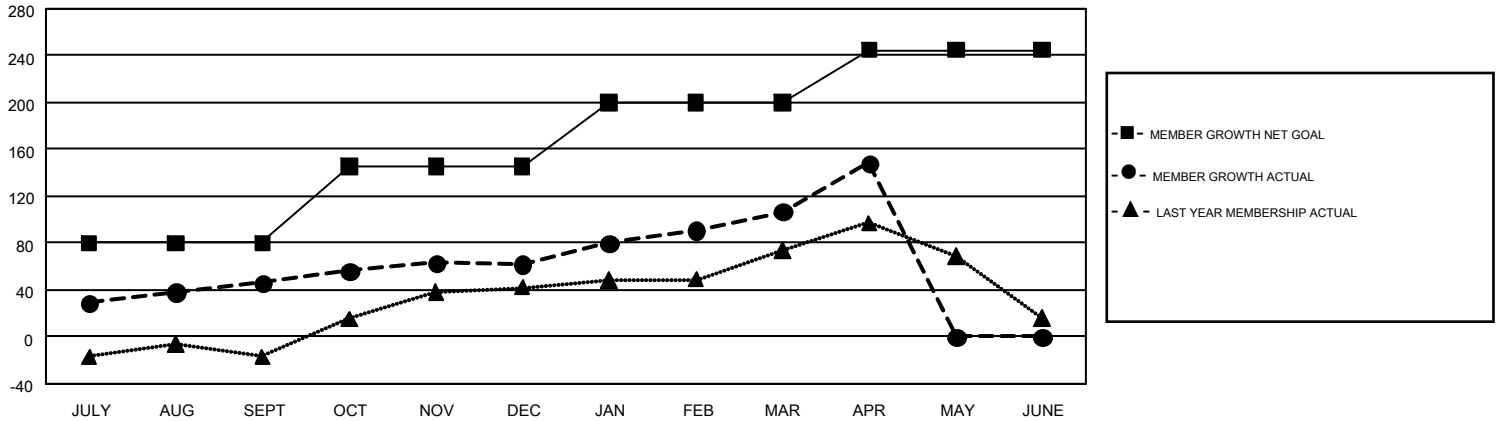
REPORT DOES NOT INCLUDE CLUBS IN UNDISTRICTED AREAS.

Clubs				Members			
RESULTS FOR 2018-2019				RESULTS FOR 2018-2019			
QUARTER	NEW CLUB GOAL	NEW CLUBS	DROPPED CLUBS	QUARTER	MEMBER GROWTH NET GOAL	MEMBER GROWTH ACTUAL	DROPPED MEMBERS ACTUAL (including transfers)
JULY/AUG/SEPT	2	1	0	JULY/AUG/SEPT	80	143	86
OCT/NOV/DEC	1	0	0	OCT/NOV/DEC	65	58	41
JAN/FEB/MAR	1	0	0	JAN/FEB/MAR	55	74	25
APR/MAY/JUNE	1	1	0	APR/MAY/JUNE	45	51	9

GOALS AND ACTUAL NEW CLUBS CUMULATIVE



GOALS AND ACTUAL MEMBERS CUMULATIVE



DROPPED CLUBS: 0	69 CLUBS OF 92 ADDED 1 OR MORE NEW MEMBERS	<u>GENDER DISTRIBUTION</u>	
<u>DROPPED MEMBERS</u>		MALE	1,676 (71.44%)
DECEASED	2	FEMALE	670 (28.56%)
CLUB CANCELLED	0	TOTAL FAMILY UNIT MEMBERS 70	
OTHER	159	FAMILY MEMBERS PAYING HALF DUES 38	
TOTAL	161		

[CLICK HERE FOR CUMULATIVE MEMBERSHIP DATA](#)